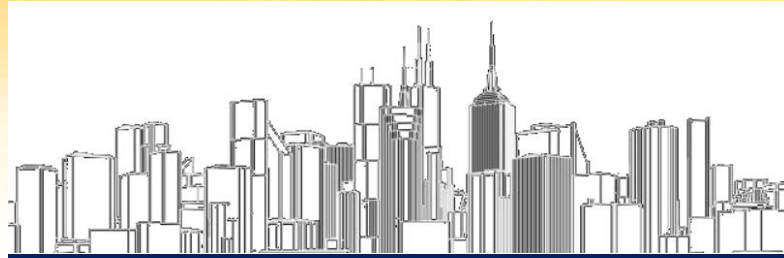


The logo for ONE ORIGIN. It features a circular icon on the left composed of three curved segments in blue, red, and dark blue. To the right of the icon, the words "ONE" and "ORIGIN" are stacked vertically in a bold, dark grey, sans-serif font.

SEAMLESSLY LIVING



ORIGIN EMPIRE



HOME

CONDOMINIUM
DETACHED HOUSE

LIFESTYLES

ACCOMMODATION
OFFICE & RETAIL
FOOD

SERVICE SOLUTIONS

PROPERTY
MANAGEMENT
HOUSEKEEPING
REALTOR
RENTAL SERVICE
DIGITAL BUTLER

ONE ORIGINE



ACCOMMODATION

HOTEL
SERVICED APARTMENT



MIXED USE

OFFICE & RETAIL



FOOD

RESTUARANTS
FOOD DISCTRICT



STAYBRIDGE SUITES

BANGKOK THONGLOR

Type of Project : Hotel & Serviced Apartment

Target Opening : Q4/2019



BANGKOK THONGLOR

ONE 24

BANGKOK SUKHUMVIT 24

Type of Project : Mixed Use Project, Hotel, Serviced Apartment, Serviced Office, Retail

Target Opening : Q1/2021



STAYBRIDGE SUITES

CHONBURI SIRACHA

Type of Project : Hotel & Serviced Apartment

Target Opening : Q1/2021



CHONBURI SIRACHA



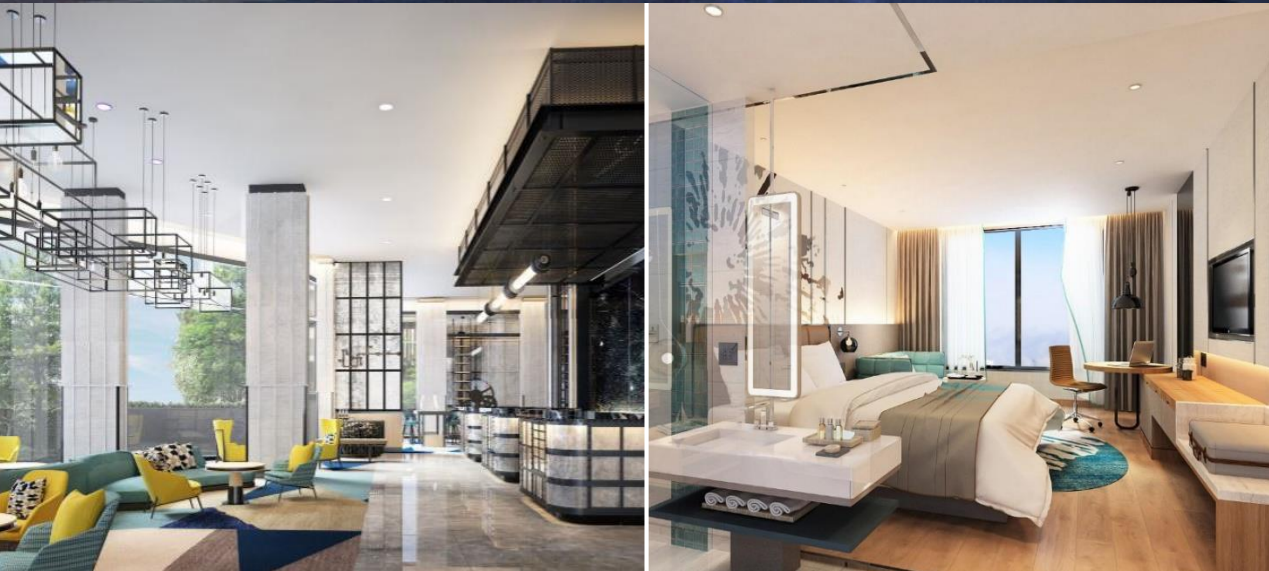


HOLIDAY INN & SUITES

CHONBURI SIRACHA

Type of Project : Hotel & Serviced Apartment

Target Opening : Q4/2019





ORIGIN DISTRICT SIRACHA

CHONBURI SIRACHA

ORIGIN DISTRICT SIRACHA

CHONBURI SIRACHA

Type of Project : Mixed Use Project
- Condominium
- Hotel & Serviced Apartment
- Retail





PROJECT INFORMATION

DEVELOPER	Origin Property	Origin Property	Origin One	Origin One
LAND PLOT SIZE	6-1-43.3 rai (2,543.3 sq.wa.)	2-0-90.2 rai (890.2 sq.wa.)	2-0-46 rai (846 sq.wa.)	1-3-5 rai (705 sq.wa.)
PROJECT	Condominium	Condominium	Hotel & Service Apartment	Community Mall
NO. OF BUILDINGS	8 storey, 4 buildings	36 storey, 1 building	30 storey, 1 building	3 storey, 1 building
NO. OF UNITS OPENING	798 units	534 units	347 units	
	2017	2018	2017	2018



TRANSPORTATION

91.7 km. to Suvarnabhumi Airport
62.7 km. to U-Tapao International Airport

SHOPPING PLACE

5.00 km. to Tukcom
5.00 km. to Harbor Mall
5.50 km. to Robinson Siracha

WORK PLACE

3.00 km. to Leamchabang Sea Port
7.00 km. to Saha Group Industrial

EDUCATION PLACE

50.00 m. to Kasetsart University

HOSPITAL

6.00 km. to Phyathai Hospital
7.00 km. to Samitivej Sriracha Hospital





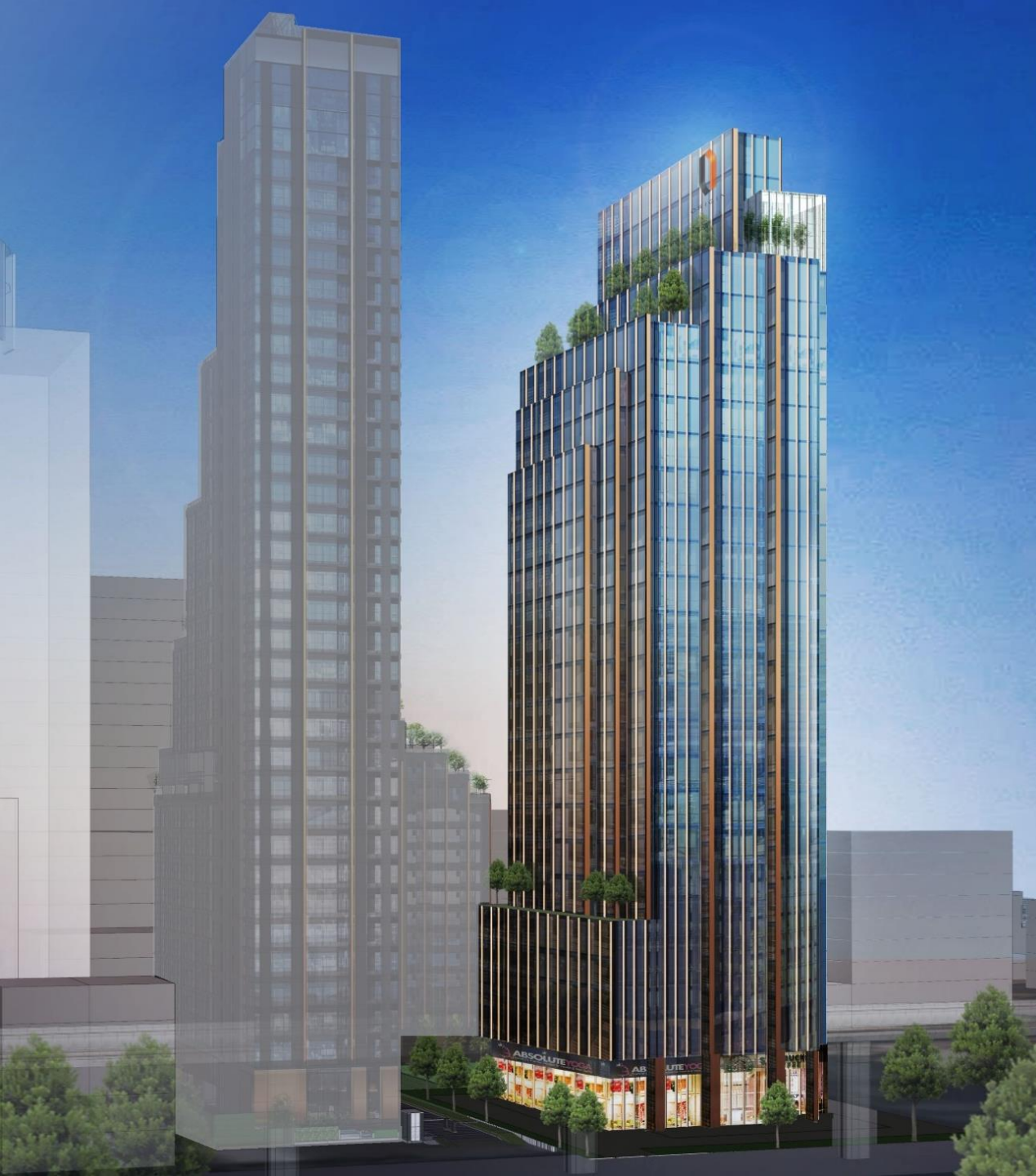
ONE PHAYATHAI

BANGKOK PHAYATHAI

ONE PHAYATHAI

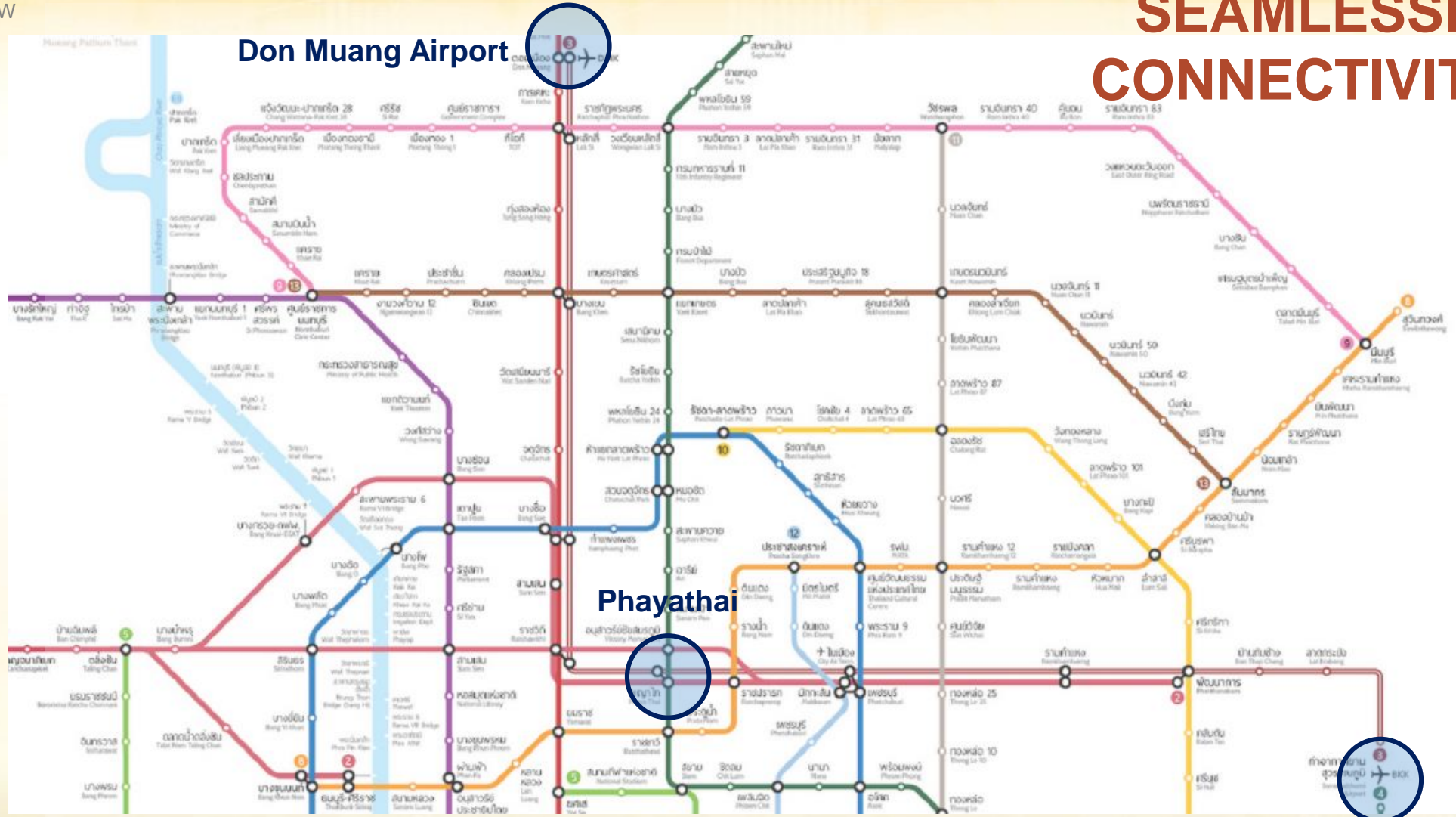
BANGKOK PHAYATHAI

- Location** : Phayathai Rd., Bangkok
- Land Plot Size** : 1-3-0 Rai (700 sq.w.)
- Project Type** : Mixed Use Project
- 1 Building, 30 Storeys
 - 5 Stars Hotel Approx. 160 Keys
 - Grade A Office Approx. 7,000 sq.m.
 - Retail Zone Approx. 2,000 sq.m.
- Target Opening** : Q3 / 2021





SEAMLESSLY CONNECTIVITY



Suvarnabhumi Airport

LIVE WORK PLAY

ONE PHAYATHAI

ONE PHAYATHAI

ONE PHAYATHAI | BANGKOK PHAYATHAI

PRELIMINARY DESIGN

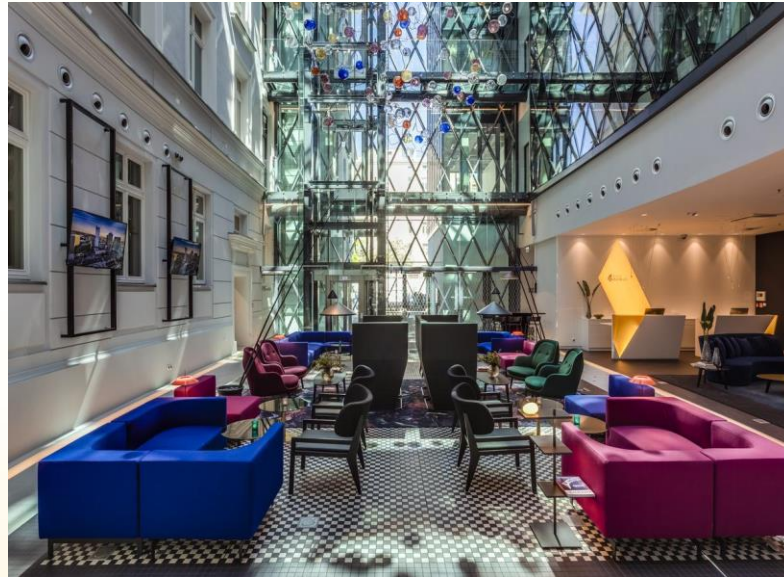




ONE PHAYATHAI | BANGKOK PHAYATHAI

5 stars International Boutique hotel

THAILAND
Focus 2018
The Future is Now

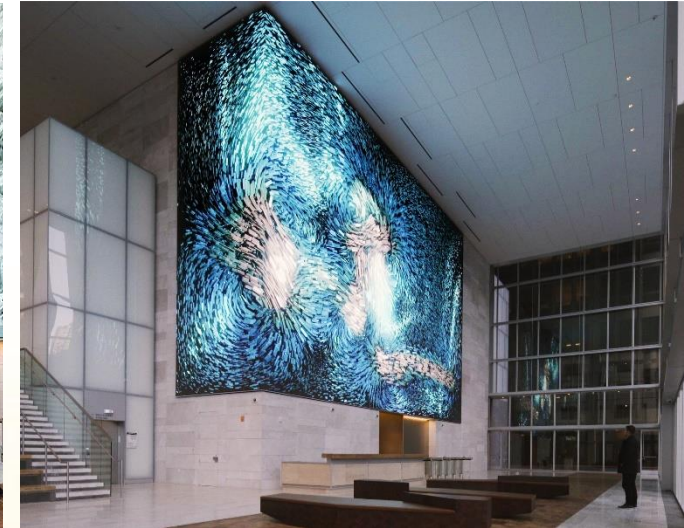




ONE PHAYATHAI | BANGKOK PHAYATHAI

Premium Office

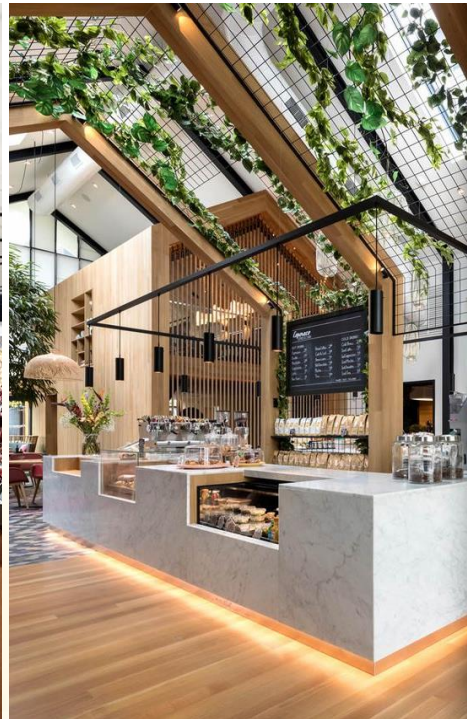
THAILAND
Focus 2018
The Future is Now



**BASEMENT
SUPERMARKET**



**GROUND FLOOR
CAFE**



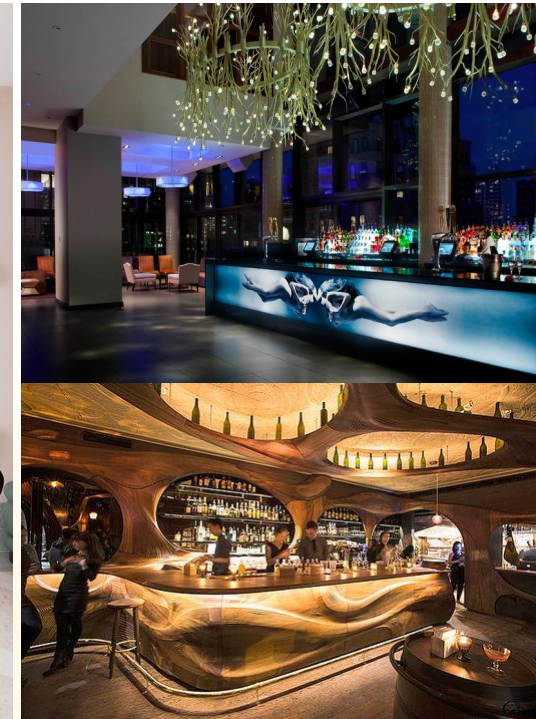
**M FLOOR
RESTUARANT**



**M FLOOR
BEAUTY / AESTHETIC**



**ROOFTOP FLOOR
RESTAURANT & BAR**



ONE PHAYATHAI

BANGKOK PHAYATHAI

BASEMENT FLOOR SUPERMARKET



ONE PHAYATHAI

BANGKOK PHAYATHAI

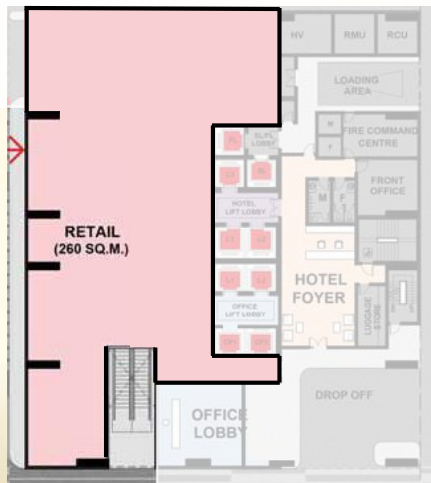
GROUND FLOOR CAFÉ



ONE PHAYATHAI

BANGKOK PHAYATHAI

M FLOOR
RESTAURANTS ZONE
BEAUTY SALON ZONE



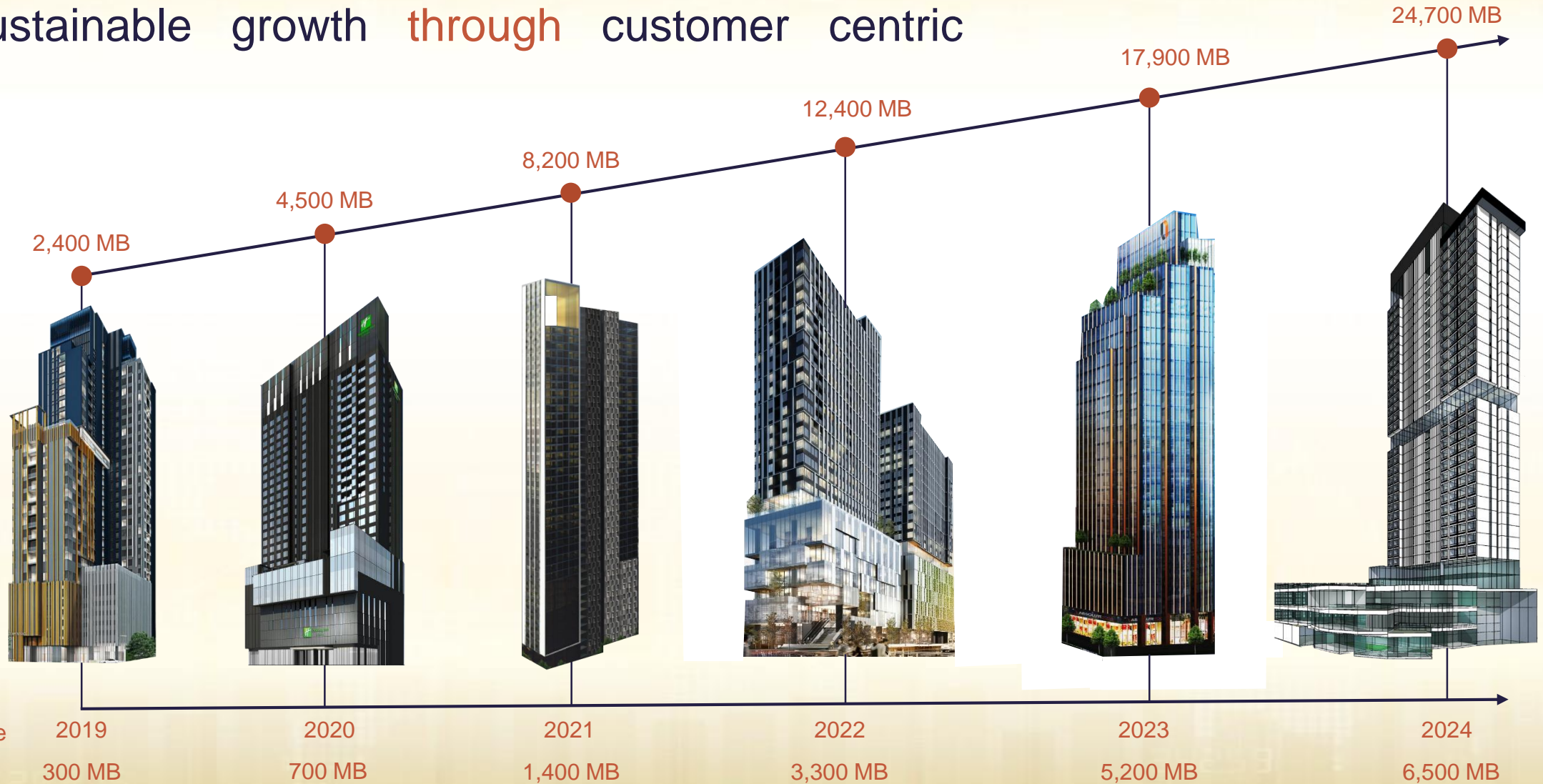
ONE PHAYATHAI

BANGKOK PHAYATHAI

**ROOF TOP
RESTAURANTS & BARS**



To become Thailand's leading total service developer with sustainable growth through customer centric mindset



The logo for "ONE ORIGIN". It features a circular graphic on the left composed of three curved segments in blue, red, and dark blue. To the right of the graphic, the word "ONE" is stacked above the word "ORIGIN" in a large, bold, black, sans-serif font.

THANK YOU